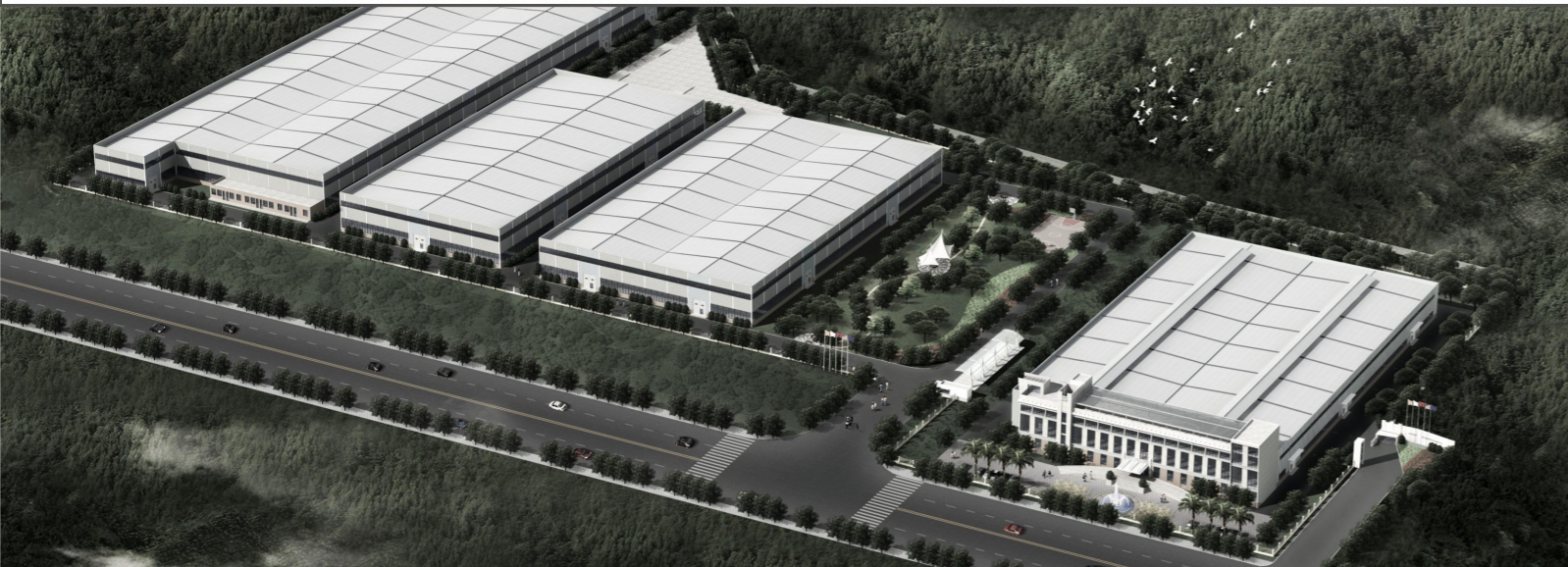


Address No.1, jinxin Road, Lushan Industrial area, Fuyang, Zhejiang China
Tel 0086-571-28001570
 0086-571-28935028
 0086-571-28979902
Fax 0086-571-28001569

Email
 For sales
 info@maxforklift.com
 For spare parts
 parts@maxforklift.com

All rights reserved.
 If any doubt, please contact us.



A SERIES IC FORKLIFT TRUCK

A Series 4 - Compact 5T ICE Forklift
 A Series 5 - 7T Diesel Forklift




A series 4-Compact 5T Diesel forklift

Distinguishing mark		FDTA45		FDTA50			
1	Model						
2	Type	Diesel		Diesel			
3	Optional Type	W13/W(13A)3/G(25)3		W13/W(13A)3/G(25)3			
4	Load capacity	kg	4500	kg	5000		
5	Load centre	mm	500	mm	500		
6	Load distance	mm	575	mm	580		
7	Wheelbase	mm	2100	mm	2100		
8	Unladen weight	kg	6500	kg	7010		
Weight	Axle loading	laden	Front	kg	9766	kg	10900
			Rear	kg	1234	kg	1200
	Unladen	Front	kg	2837	kg	3160	
		Rear	kg	3663	kg	3850	
Tyres: L = pneumatic, V = cushion, SE = superelastic		L		L			
Tyres, chassis	Tyre	Front	300-15-18PR	Front	300-15-18PR		
		Rear	7.00-12-12PR	Rear	7.00-12-12PR		
	Number of wheels, front/rear (X = driven)		2X2		2X2		
Track width	Front	mm	1190	mm	1190		
	Rear	mm	1130	mm	1130		
Mast tilt angle	F/R	Deg	6/12	Deg	6/12		
Height of mast	lowered	mm	2250	mm	2250		
	extended	mm	4260	mm	4260		
Free lift height		mm	150	mm	155		
Lift height		mm	3000	mm	3000		
Dimensions	Overall dimensions	overhead guard height	mm	2250 (2400)	mm	2250 (2400)	
		Seat height	mm	1350	mm	1350	
		Towing coupling height	mm	340	mm	340	
		Overall length	mm	4280	mm	4345	
		Length to face of forks	mm	3210	mm	3275	
	Overall width	mm	1490	mm	1490		
	Fork size (ISO2331)	LxWxT	mm	50/150/1070	mm	55/150/1070	
	Fork carriage width (DIN 15173, Class II A/II B)		mm	1380	mm	1380	
	Ground clearance	bottom of mast	mm	155	mm	155	
		wheelbase centre	mm	186	mm	186	
Working aisle width	1000 x 1200 crossways	mm	4625	mm	4685		
with pallet(Ast)*	800 x 1200 crossways	mm	4425	mm	4485		
Outer turning radius		mm	2850	mm	2905		
Performance data	Speed	Travel (Unladen/laden)	km/h	24/25	km/h	25/27	
		Lifting (Unladen/laden)	mm/s	0.53/0.56	mm/s	0.53/0.56	
		Lowering (Unladen/laden)	mm/s	0.48/0.50	mm/s	0.48/0.50	
	Max. Drawbar pull (Unladen/laden)		KN	30/23	KN	30/23	
Max. Gradeability (Unladen/laden) @ 1.6km/h		%	22/25	%	20/25		
Service brake			hydraulic		hydraulic		
Additional data	Operating pressure (For attachments)		MPa	19.5	MPa	19.5	
	Fule tank	capacity		100		100	
	Towing coupling	type DIN 15170		PIN		PIN	

A series 4-Compact 5T LPG forklift


Distinguishing mark		FGLTA45		FGLTA50			
1	Model						
2	Type	Gasoline/LPG		Gasoline/LPG			
3	Optional Type	W(J1)3		W(J1)3			
4	Load capacity	kg	4500	kg	5000		
5	Load centre	mm	500	mm	500		
6	Load distance	mm	575	mm	580		
7	Wheelbase	mm	2100	mm	2100		
8	Unladen weight	kg	6500	kg	7010		
Weight	Axle loading	laden	Front	kg	9766	kg	10900
			Rear	kg	1234	kg	1200
	Unladen	Front	kg	2837	kg	3160	
		Rear	kg	3663	kg	3850	
Tyres: L = pneumatic, V = cushion, SE = superelastic		L		L			
Tyres, chassis	Tyre	Front	300-15-18PR	Front	300-15-18PR		
		Rear	7.00-12-12PR	Rear	7.00-12-12PR		
	Number of wheels, front/rear (X = driven)		2X2		2X2		
Track width	Front	mm	1190	mm	1190		
	Rear	mm	1130	mm	1130		
Mast tilt angle	F/R	Deg	6/12	Deg	6/12		
Height of mast	lowered	mm	2250	mm	2250		
	extended	mm	4260	mm	4260		
Free lift height		mm	150	mm	155		
Lift height		mm	3000	mm	3000		
Dimensions	Overall dimensions	overhead guard height	mm	2250 (2400)	mm	2250 (2400)	
		Seat height	mm	1350	mm	1350	
		Towing coupling height	mm	340	mm	340	
		Overall length	mm	4280	mm	4345	
		Length to face of forks	mm	3210	mm	3275	
	Overall width	mm	1490	mm	1490		
	Fork size (ISO2331)	LxWxT	mm	50/150/1070	mm	55/150/1070	
	Fork carriage width (DIN 15173, Class II A/II B)		mm	1380	mm	1380	
	Ground clearance	bottom of mast	mm	155	mm	155	
		wheelbase centre	mm	186	mm	186	
Working aisle width	1000 x 1200 crossways	mm	4625	mm	4685		
with pallet(Ast)*	800 x 1200 crossways	mm	4425	mm	4485		
Outer turning radius		mm	2850	mm	2905		
Performance data	Speed	Travel (Unladen/laden)	km/h	24/25	km/h	25/27	
		Lifting (Unladen/laden)	mm/s	0.53/0.56	mm/s	0.53/0.56	
		Lowering (Unladen/laden)	mm/s	0.48/0.50	mm/s	0.48/0.50	
	Max. Drawbar pull (Unladen/laden)		KN	30/23	KN	30/23	
Max. Gradeability (Unladen/laden) @ 1.6km/h		%	22/25	%	20/25		
Service brake			hydraulic		hydraulic		
Additional data	Operating pressure (For attachments)		MPa	19.5	MPa	19.5	
	Fule tank	capacity		100		100	
	Towing coupling	type DIN 15170		PIN		PIN	

KUBOTA



Type: W(13A)3
Model: V3800 (Eu V+ Tier 4)
Rated output: 54.6 kw/ 2200 rpm
Rated torque: 305.4 N m/1500 rpm
No. of cylinder: 4
Bore x Stroke: 100 x 120mm
Displacement: 3.769L
Range: A series 4-X5T

MITSUBISHI




Type: W13
Model: S6S
Rated output: 52kw/2450rpm
Rated torque: 250N m/1600rpm
No. of cylinder: 6
Bore x Stroke: 94 x 120mm
Displacement: 4.996L
Range: A series 4.0- x5.0 ton

XINCHAI




Type: G(25)3
Model: 4D35ZG31-056
Rated output: 60kw/ 2200 rpm
Rated torque: 300N m/1600-1800rpm
No. of cylinder: 4
Bore x Stroke: 98 x 115mm
Displacement: 3.47L
Range: A series 4.5ton


Diesel



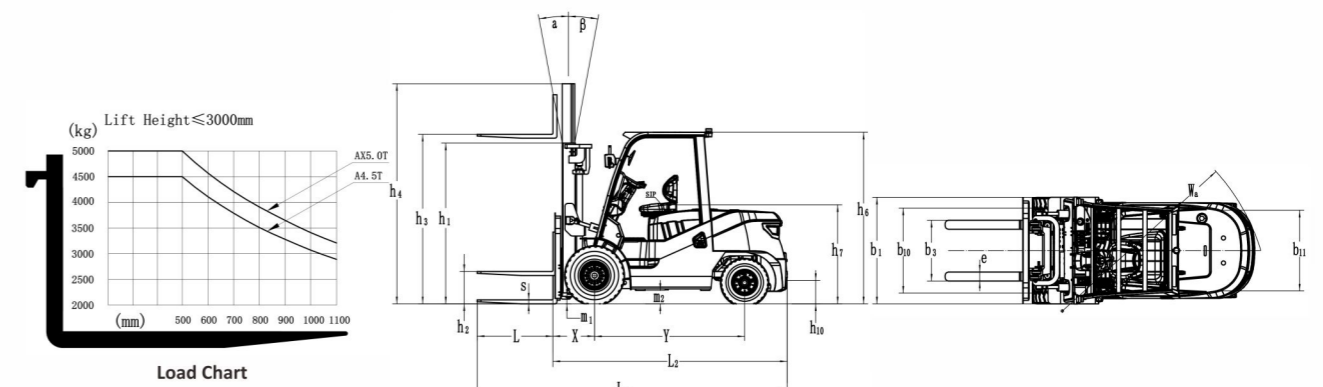
Gasoline/LPG



KUBOTA



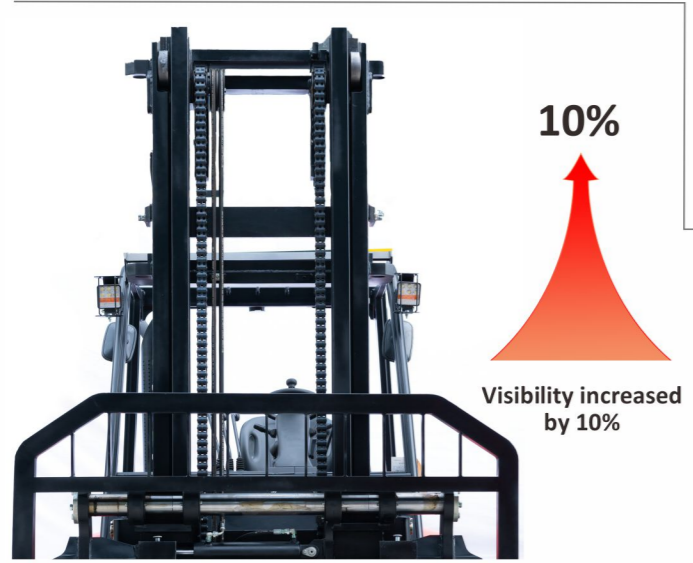
Type: W(J1)3
Model: WG3800 (Eu V)
Rated output: 54.6 kw/ 2400 rpm
Rated torque: 246.8 N m/ 1400 rpm
PG 271.4 N m/ 1200 rpm
No. of cylinder: 4
Bore x Stroke: 100 x 120mm
Displacement: 3.769L
Range: A series 4.0- x5.0 ton/LPG



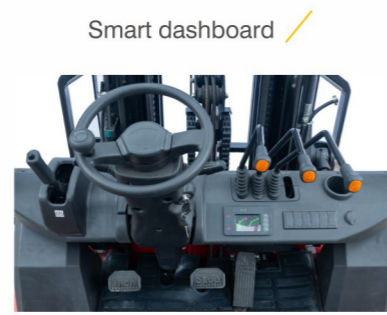


Safety & Stability

Mast and Mast Hydraulic (View improvement) ✓



10%
↑
Visibility increased by 10%



Smart dashboard ✓

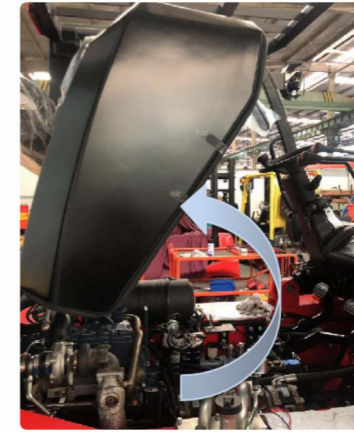
Replace the mechanical display with digital one, after entering the menu, the language types can be adjusted according to different customer requirements.



Add counterweight grill, effective dustproof and internal protection, increased safety

Easy Maintenance

Hood opening angle ✓



Use rough terrain truck hinge
Hood opening angle:
from old 60 degrees to 80 degrees, better accessibility to maintenance

High Efficiency

Hydraulic system improvement:
The overall cleanliness of the hydraulic system is improved by wash machine.



Oil tank wash machine



Electrical elements improvement ✓

Waterproof plug-in, with ratings of Ip56. Plug-ins that reserve optional features are easy to install. (M series large tonnage many option not available i.e. handbrake alarm, seat belt sequence) while the new harness has reserved those functions. The corresponding electrical connector plug-ins are all updated to AMP plug-in, with better waterproofing.



Hand brake use ratchet type (lighter and easier) ✓

Integrated electrical box, smaller in size than for the original M-Series, space-saving
The waterproof rating of the new electrical box is IP56 and the fire rating reaches V0.
The new electrical box integrates the DH296 box function and has a driving safety device.
Will improve vehicle safety performance (M-Series electrical boxes is without this device)

